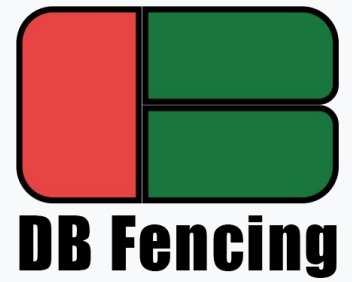


# Welcome & Agenda

Thank you for cooperate with us.



Company Overview



Product Portfolio - Australian Market Focus



Manufacturing Excellence



Quality Assurance



Competitive Advantages



Partnership Opportunities

# Company Introduction - DB Fencing



Established: 2009 (15+ years of experience)



Factory Size: 10,000 sqm with 10 Production Lines



Production Capacity: 4,000 steel fences/month



Export Markets: Australia, New Zealand, North America, Europe



Export Percentage: 85.72%



Annual Export Revenue: USD 3,000,000



Certifications: ISO9001, SGS Testing Passed



# Australian Steel Picket Fence - Product Overview



Panel Length: 2400mm standard (Australian specification)



Uprights: 25 × 25 × 1.6mm welded tubular steel



Rails: 40 × 40 × 2.0mm square tube for extra strength



Spacing: 135mm centres between pickets



Applications:

Residential

Commercial

Industrial

High-Security



# Spear Top Metal Fence - Specifications

## Australian Specifications

-  Material: Pre-galvanized Q195/Q235 steel
-  Pickets: 25 × 25mm square tube
-  Rails: 40 × 40mm square tube
-  Posts: 60 × 60mm heavy-duty
-  Heights Available: 900mm, 1200mm, 1500mm, 1800mm, 2100mm
-  Panel Length: 2400mm (custom lengths available)
-  Welding: Silicon bronze full welding for superior strength
-  Surface Treatment: Hot-dip galvanized + powder coated





# Swimming Pool Fence (Australian Standards)

-  Built to: AS1926-2012 / AS1926-2007 standard
-  Powder coated to: AS4506-2005 standard
-  Pre-galvanized steel to: AS1450:1983 & AS1397:2001
-  Design: Flat top (child-safe)
-  Panel sizes: 1200H × 2400L, 1200H × 3000L, 1500H × 2400L
-  Pickets: 20 × 20mm, 16 × 16mm
-  Australian-approved: All pool safety requirements met



# Manufacturing Excellence

## Industry-Leading Production Capabilities



**10**

Welding Production Lines



**2,000+**

Pieces Weekly Capacity



**5+**

Design Experts  
(5+ years experience)



**Advanced**

Automated Welding Platforms



**7-Day**

Fast Sampling Capability



**1**

Plastic Clamp Machine  
for Immediate Accessories

# Quality Control Process

Strict QC System for Superior Products



**Q195/Q235**

Standard Raw Tubes Material



**360°**

Full Welding Inspection



**>42 microns**

Galvanizing Thickness



**0.1mm**

Powder Coating Thickness  
(Akzo Nobel)



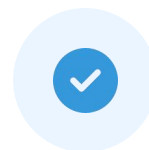
**100%**

Testing Before Delivery



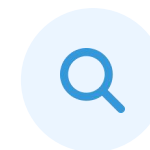
**ISO9001**

Certified Manufacturing



**SGS**

Testing Passed



**In-Line**

Inspection at Each  
Production Stage

# Surface Treatment Options

## Premium Finishes



Hot-Dip Galvanizing (>42 microns) Maximum corrosion resistance, ensures long-lasting protection against rust and environmental damage. Provides 3+ years no fade guarantee.



Powder Coating (Akzo Nobel, 0.1mm) Any RAL color available upon request, UV resistant and weatherproof. Premium quality coating provides vibrant, long-lasting appearance.



Combined: Galvanized + Powder Coated Best durability and appearance. The ultimate solution for harsh environments, offering superior protection with excellent aesthetic finish.





# Product Details & Features



Full Saddle Welding Joints for maximum strength and durability



Surface Options: Pre-galvanized OR hot-dip galvanized finishes



Rail Options: 2, 3, or 4 horizontal rails available



Tube Gauge: 14 gauge standard thickness



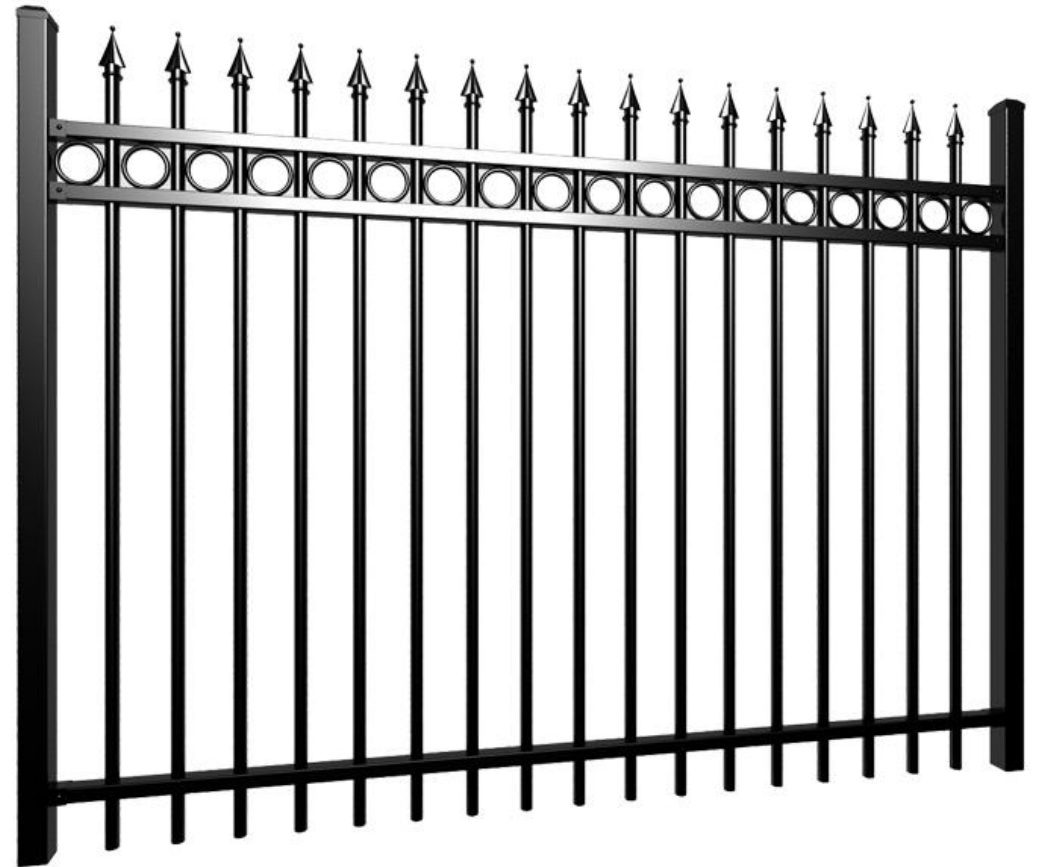
Heights Available: 36", 48", 54", 60", 72" (custom sizes available)



Eco-friendly: Rodent-proof, rot-proof, sustainable materials



Easy Installation: Comprehensive fittings and detailed instructions



# Packaging & Logistics

## Professional Packaging

-  Panels: Air bubble film + wood/metal pallet
-  Posts: Individual plastic film with protected caps + pallet
-  Accessories: Carton packaging
-  Container Loading: Strong and solid pallets for secure transport
-  Quality Control: QC supervisor monitors loading process
-  Security: Panels remain intact during shipping

DB FENCING



# Competitive Advantages

## Why Choose DB Fencing



### CAPACITY

**10 Lines**

Production capacity of 2,000+ pieces per week with multiple production lines



### PRICE

**10% Lower**

Reduced steel costs through bulk purchasing power and efficient manufacturing



### QUALITY

**ISO9001**

Certified quality control systems with SGS testing verification



### SERVICE

**24-Hour**

Rapid quote response time and dedicated customer support



### FLEXIBILITY

**MOQ 100 pcs**

Low minimum order quantity for sample testing and smaller projects



### EXPERIENCE

**15 Years**

Extensive export experience with proven track record of success



### MARKET FOCUS

**95% Australian**

Specialized expertise in Australian market requirements and standards



# Color Options



## Standard Colors

Our most popular powder coating colors for Australian installations: Black, Cream, Grey, Green, and Blue. Classic options that complement any architectural style.



## RAL Color System

Any RAL color available upon request. Choose from over 200 standardized colors to perfectly match your property's aesthetic or corporate branding requirements.



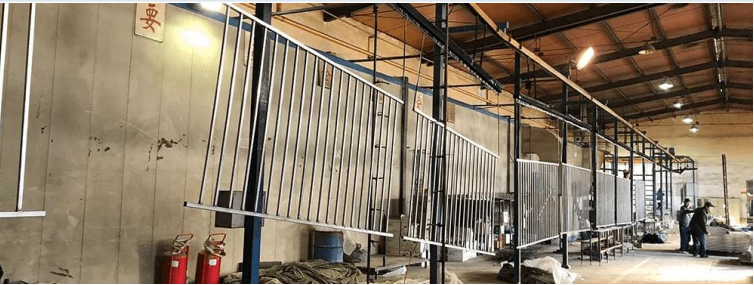
## Custom Finishes

Specialty finishes including brass color, metallic, and textured options available for distinctive projects. Ideal for high-end residential and prestigious commercial installations.



## Weather Resistant

All our powder coatings are UV resistant and



## Premium Coating


We exclusively use Akzo Nobel powder coating



## 3+ Years Fade-Free

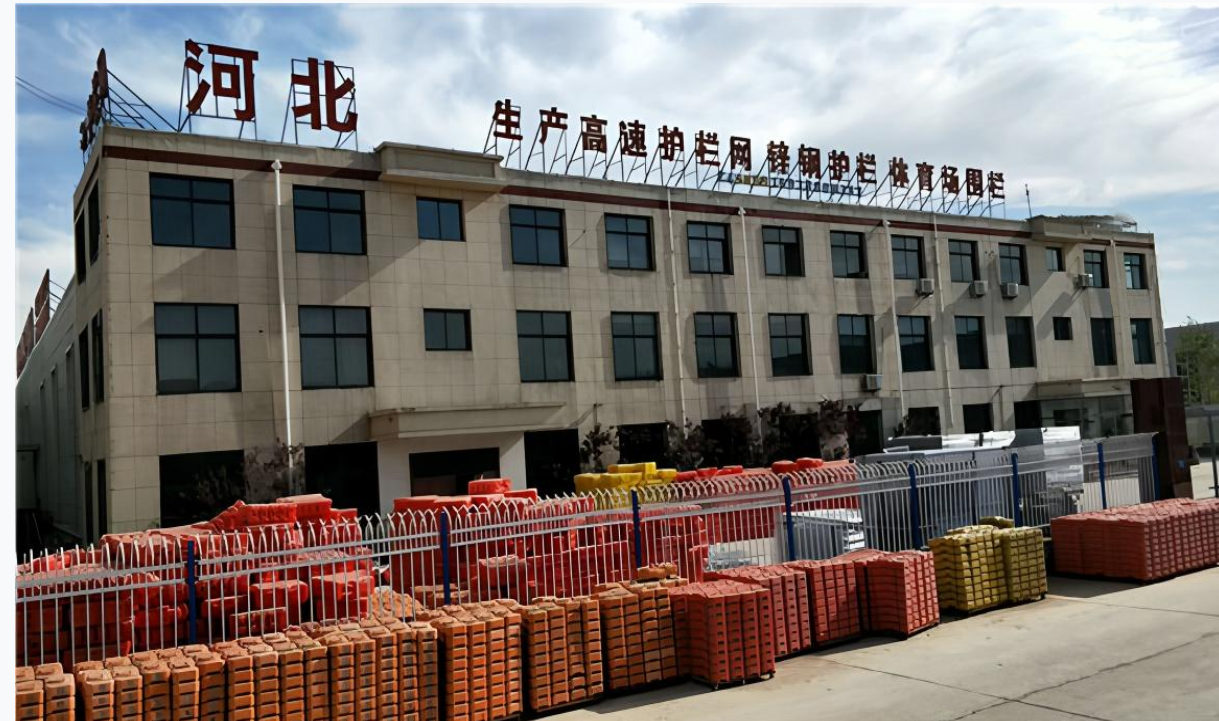


# Factory Tour Preview

-  10,000 sqm modern facility with state-of-the-art equipment
-  10 welding production lines with advanced automation
-  Quality control laboratory for rigorous testing
-  Powder coating line using premium Akzo Nobel powder
-  Raw material inspection area for premium steel selection
-  Finished product warehouse with organized inventory system
-  Packaging & shipping department for secure global delivery

*We look forward to showing you our manufacturing excellence firsthand!*

DB FENCING



# Partnership Opportunities

## Discussion Topics for This Visit



✓ Product Quality Review & Specifications



✓ Australian Standards Compliance



✓ Pricing & Volume Discounts



✓ Delivery Schedules & Logistics



✓ Customization Capabilities



✓ After-Sales Support & Warranty



✓ Long-Term Partnership Framework



✓ Market Development Strategies

# Our Commitment to You

## Value Proposition for Australian Clients



**15 Years**

Steel Fencing Expertise



**100%**

Australian Standard Compliance  
(AS1926, AS4506, AS1450)



**Direct**

Competitive Factory-Direct Pricing



**100 pcs**

Flexible MOQ for Testing



**24 Hours**

Inquiry Response Time



**Complete**

Technical Support  
(Pre-sales & After-sales)



**Guaranteed**

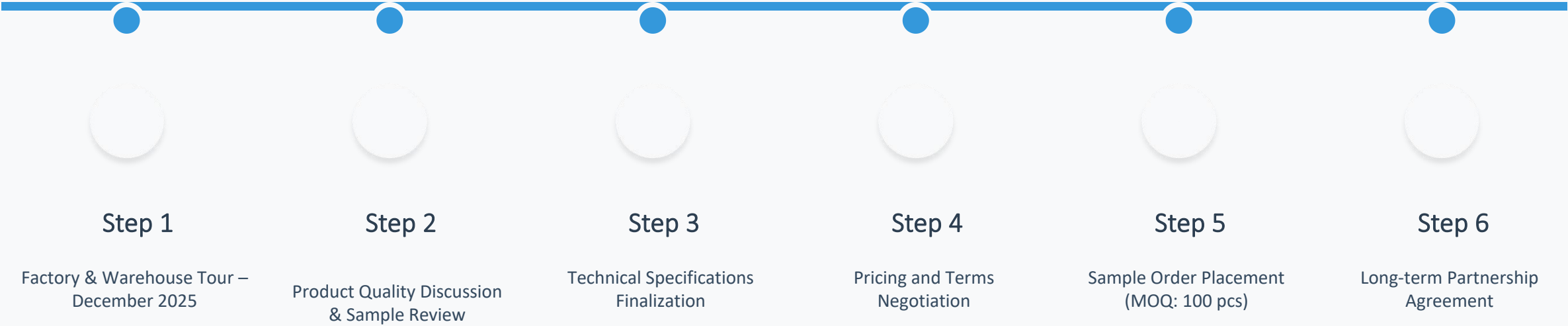
Quality with Compensation  
Commitment



**Custom**

Solutions for Unique  
Requirements

# Next Steps



Moving forward together to build a strong partnership



# Contact Information

DB Fencing - Your Trusted Partner



Email

info@metalfencetech.com



Phone

+86 15324294271



Website

metalfencetech.com



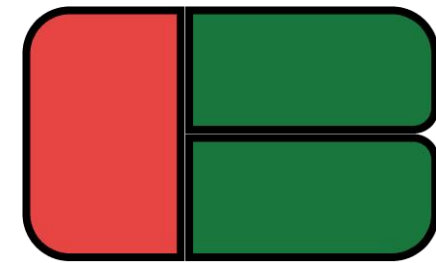
Factory

10,000 sqm facility, China



Response Time

Within 24 hours



## DB Fencing

**Strength. Security. Style.**

Let's build a strong partnership together! Contact us today to discuss your Australian steel picket fence requirements.

# Thank You

---

Thank you for your time and trust in DB Fencing  
**We look forward to a successful partnership**

**Questions & Discussion**